

OliBasic User Manual



Written by aFox

OliBasic version 3.00

Originally published as De_Re_Basic!

Original Author Paul Laughton, 2011



Edited by Robert A. Rioja

robrija@gmail.com

<http://www.RvAdList.com>

Version 2024-04-13

Table of Contents

OliBasic User Manual.....	1
Table of Contents.....	2
1 Introduction.....	4
1.1 OliBasic.....	4
1.2 Credits.....	4
1.3 Disclaimer.....	4
1.4 Documentation.....	4
1.5 References.....	5
2 Permissions.....	6
3 Editor.....	7
4 Menu.....	8
4.1 Sub Menu.....	8
4.1.1 Reload.....	8
4.1.2 Reload and Run.....	8
4.1.3 Previous.....	8
4.1.4 Manual-Help.bas.....	8
4.1.5 SearchExternally.bas.....	9
4.1.6 CodeService.bas.....	9
4.1.7 SaveAndRunWithPreHandling.bas.....	9
4.1.8 SaveAndCompile.bas.....	9
4.1.9 FormatExternally.bas.....	9
4.1.10 DirectoryFiles.bas.....	9
4.2 Run.....	9
4.3 Load.....	9
4.4 Load and Run.....	10
4.5 Save.....	10
4.6 Save and Run.....	10
4.7 Clear.....	11
4.8 Search.....	11
4.8.1 NEXT Button.....	11
4.8.2 DONE Button.....	11
4.8.3 REPLACE Button.....	11
4.8.4 REPL. ALL Button.....	12
4.8.5 BACK Key.....	12
4.9 Format.....	12
4.10 Delete.....	12
4.11 Start/Stop FTP Server.....	12
4.12 Preferences.....	13
4.12.1 Screen Colors.....	14
4.12.1.1 Color Scheme.....	14
4.12.1.2 Custom Colors.....	14
4.12.2 Console Settings.....	14
4.12.2.1 Font Size.....	14
4.12.2.2 Typeface.....	14
4.12.2.3 Console Menu.....	14
4.12.2.4 Console Lines.....	14
4.12.2.5 Empty Console Color.....	14
4.12.3 Editor Settings.....	15
4.12.3.1 Editor Lines.....	15

4.12.3.2 Editor Line Wrap.....	15
4.12.3.3 Editor AutoIndent.....	15
4.12.4 Menu Items On Action Bar.....	15
4.12.4.1 RUN on action bar.....	15
4.12.4.2 LOAD on action bar.....	15
4.12.4.3 SAVE on action bar.....	15
4.12.4.4 SAVE and RUN on action bar.....	15
4.12.4.5 CLEAR on action bar.....	15
4.12.4.6 SEARCH on action bar.....	15
4.12.4.7 FORMAT on action bar.....	15
4.12.4.8 EXIT on action bar.....	15
4.12.4.9 SUB MENU ICON on action bar.....	16
4.12.5 Screen Orientation.....	16
4.12.6 FTP Server Port.....	16
4.12.7 Base Directory.....	16
4.13 Commands.....	16
4.14 About.....	16
4.15 Exit.....	16
5 Running a Program.....	18
5.1 Run.....	18
5.2 Menu.....	18
5.2.1 Stop.....	18
5.2.2 Editor.....	18
6 An OliBasic Program.....	19
7 Sample Programs.....	20
8 Launcher Shortcut Tutorial.....	21
8.1 Introduction.....	21
8.2 How to Make a Shortcut Application.....	21
8.3 What you need to know.....	21
9 OliBasic Distribution License.....	23
9.1 GNU General Public License.....	23
9.2 Apache Commons.....	31

1 Introduction

1.1 OliBasic

OliBasic is an Android interpreter for the Basic language, based on **RFO-BASIC!**, which is often referred to as **BASIC!** For purposes of generality, this document will often refer to **OliBasic** as **BASIC!**. Please note that **Basic** refers to the general definition of the language, while **BASIC!** refers to the specific implementations **RFO-BASIC!** and **OliBasic**.

1.2 Credits

Thanks to **Paul Laughton**, the original creator of RFO-BASIC! and its original documentation. The first edition was published in 2011. Mr. Laughton placed that document in the Public Domain in 2016.

Thanks also to **Mike Leavitt** for his many contributions and long-time support.

Thanks to long time RFO-BASIC! collaborator and forum contributor **Mougino (Nicolas Mougino)**, developer of the GW library and the Basic! compiler, who also developed the original cover art. Also for his code contributions to OliBasic.

Thanks to forum contributor **Spike** for relentless support and great documentation.

Thanks to forum contributor **aFox (Gregor)** for implementing OliBasic. Without aFox there would be no OliBasic.

Thanks to forum contributor **humpty** who graciously donated much of his hBasic code to OliBasic. Some of his donations are in the areas of GPS, Word_all\$, Debug.dump.fn, Notify.status, Device\$(), Globals.fnimp, Graphics, etc.

Thanks to forum contributor Tinine (Craig) for his support and proofreading abilities.

Thanks to forum contributor **tino1003870 (Tino)** for his support and his BLE contributions.

And, of course, thanks to **George Boole**, who taught us the value of 0 and 1.

1.3 Disclaimer

OliBasic and all documentation are provided with no warranty. Although the authors will make an effort to ensure correctness, the software and documentation are provided “as is”, with any faults, defects, bugs, and errors.

1.4 Documentation

This document, **OliBasic User Manual**, was developed from the original **De_Re_BASIC!** document and aFox's original OliBasic documentation. It is a companion to the **OliBasic Reference**, which was also developed from the original **De_Re_BASIC!** document.

This **OliBasic User Manual** and the **OliBasic Reference** were edited, and are maintained, by Robert A. Rioja.

The latest version of this document can be found at <https://www.RvAdList.com>.

1.5 References

OliBasic website: <https://olibasic.gitlab.io/About/index.html>

BASIC! forum: <https://www.tapatalk.com/groups/rfobasic/>

Spike's RFO-Basic! manual: <https://rfobasic.miraheze.org/>

Mougino's website: <http://mougino.free.fr/>

My website: <https://www.RvAdList.com>

2 Permissions

This application requests many permissions, permissions such as sending and receiving SMS messages, making phone calls, record audio, etc. OliBasic does not exercise any of these permissions (except writing to files) on its own. These permissions get exercised by the OliBasic programmer, you. You and only you. You exercise these permissions by means of the programs that you write.

If you write a program that uses the **Sms.send** command then OliBasic will attempt to send an SMS message. OliBasic must have permission to send SMS messages for this command to work. If you never use the **Sms.send** command then OliBasic will never send an SMS message. You are in control.

3 Editor

The Editor is where programs are written and edited. The operation of the Editor is fairly simple. Tap the screen at the point where you want to edit the program. A cursor will appear. Use the keyboard to edit at the cursor location.

If the Preference, "Editor AutoIndent," is checked, then when the Enter key is tapped, the new line will automatically indent to the indent level of the previous line. Otherwise the new line will start at the leftmost position. The AutoIndent feature may not work if you are using a software keyboard.

If the program that you are editing has been given a name via Save or Load, then that program name will be shown in the title bar. Otherwise "unnamed program" will be shown.

Some Android devices are shipped with "Settings/Developer Option/Destroy Activities" checked and/or "Settings/Energy/Quick Restart" checked. Both of these settings create problems with loading files into the Editor. It appears as if you have gone through the process of loading the file but nothing appears in the editor. The solution to the problem is to uncheck both of these options. Even better, completely turn off Developer Options unless you know that you have a legitimate development need.

If your Android device does not have a physical keyboard, you will see a virtual keyboard. If you see the virtual keyboard, then you will see different things depending upon the way you are holding the device. If the device is in landscape mode then you will see a dialog box with a chunk of the program in a small text input area. You can scroll the small chunk of text up and down in this area but you will not be able to see very much of the program at any one time. It is probably best not to try to edit a program in landscape mode; hold your device in portrait mode while editing.

On some devices, if you do a long touch on the screen, a dialog box will appear. You can use the selections in the box for selecting, copying, cutting and pasting of text, among other things. Other devices have different procedures for invoking the cut and paste functions.

4 Menu

Press the MENU key or tap the Menu icon to access the following options. On some versions of Android, you will not see all of the menu options. Instead, you will see the first five options and a **More** option. Select the **More** option to see all of the options listed.

The MENU options are:

- [Sub Menu](#)
- [Run](#)
- [Load](#)
- [Load and Run](#)
- [Save](#)
- [Save and Run](#)
- [Clear](#)
- [Search](#)
- [Format](#)
- [Delete](#)
- [Start FTP Server](#)
- [Preferences](#)
- [Commands](#)
- [About](#)
- [Exit](#)

The options are described in the following sections.

4.1 Sub Menu

The Sub Menu contains less used options and some useful programs that are described in the following subsections.

4.1.1 Reload

Reload the program currently in the editor.

This is useful if you want to discard changes that you made to your program.

4.1.2 Reload and Run

Reload the program currently in the editor and run it.

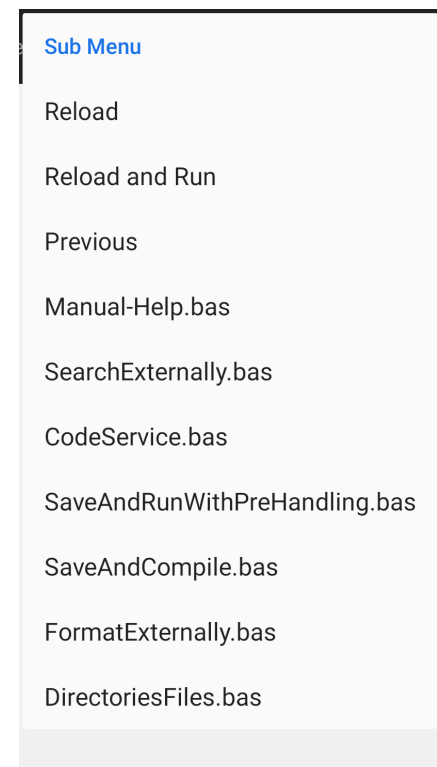
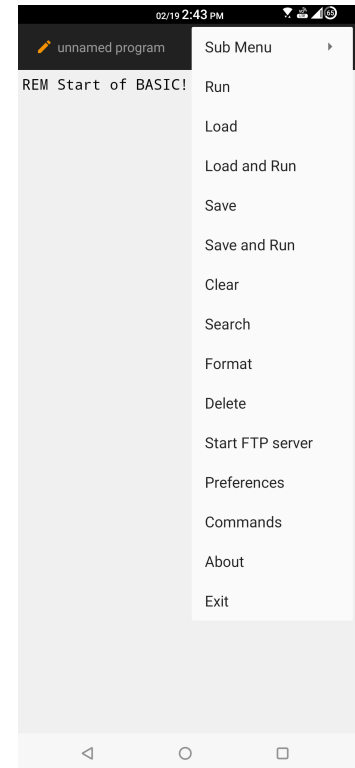
This is useful if you want to run your program disregarding any changes that you made..

4.1.3 Previous

Load a program that you had previously edited.

A dialog will show the last 10 programs that you edited. Select one to load into the Editor.

4.1.4 Manual-Help.bas



4.1.5 SearchExternally.bas

4.1.6 CodeService.bas

4.1.7 SaveAndRunWithPreHandling.bas

4.1.8 SaveAndCompile.bas

4.1.9 FormatExternally.bas

4.1.10 DirectoryFiles.bas

4.2 Run

Run the current program.

If the program has been changed since it was last saved, you will be given an opportunity to save the program before the run is started.

If a run-time error occurs then the offending line will be shown as selected in the editor.

4.3 Load

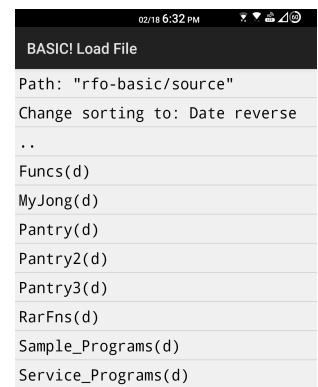
Load a program file into the editor.

After installing OliBasic and running it for the first time, selecting **Load** will display the sample programs in the directory **rfo-basic/source/Sample_Programs**. (See **Paths Explained**, later in this manual.) Otherwise, running OliBasic and selecting **Load** will display the default source directory **rfo-basic/source**. Program files must have the extension **.bas**.

If you try to load a program while there is already a program in the Editor, OliBasic will check to see if the current program has been edited. If so, you will be asked to save the program. If you choose to do so, **Load** will start after the save is done.

After selecting **Load**, you will see the "BASIC! Load File" screen. The first line shows the path to your current directory. The next line is used to select the sort order. From the third line on, you will see a sorted list of the directories and program files in the current directory.

By default, the directories and files are sorted alphabetically, and the second (sort order) line will show: "Change sorting to: Date reverse". Tapping this line will change the sort order to Date Reverse order. The second line will then display "Change sorting to: ABC...abc..." which allows you to revert to alphabetic order when desired.



Directories are denoted by the **(d)** appended to the name. Programs are shown with the **.bas** extension. If there are files in the directory that do not have the **.bas** extension, they do not appear in the list.

Tap on a **.bas** file to load it into the Editor.

You can navigate to any directory on your device for which you have **read** permission.

- Tap a directory to display its contents.
- Tap the **".."** at the top of list to move up one directory level. The tap has no effect if the current directory is the device root directory **"/"**.

You can exit the **Load** option without loading a program by tapping the BACK key.

OliBasic remembers the path to the directory you are in when you load a program. Next time you select **Load**, it starts in that directory. If you select **Save** or **Save and Run**, the file is saved in the remembered directory (unless it is **Sample_Programs**).

4.4 Load and Run

Load a program file into the editor and run it.

Selecting this option is exactly the same as first selecting **Load** and then selecting **Run**. The selected program is loaded into the Editor and is run immediately.

4.5 Save

Save the program currently in the editor.

A dialog box displays the path to the directory where you will save the file and an input area where you can enter the file name. If the current program has a name because it was previously loaded or saved, then that name will be in the text input area. Type in the name you want the file saved as and tap **OK**. The extension **.bas** will be added to file name if it is not already there.

If you do not enter a file name, the default file name **default.bas** is used.

The path to the directory you were in when you last loaded or saved a program is remembered. When you **Save**, the file name you type is saved in the remembered directory. If the name you type includes subdirectories, the new path is remembered. The name you type can include **"../"**. Be careful if you are using a soft keyboard, as it may automatically insert spaces that you don't want.

You cannot save programs in the sample program directory **source/Sample_Programs**. If you **Load** a program from **source/Sample_Programs**, change it, and **Save** it, the program is saved in **source**.

You can exit **Save** without saving a file by tapping the BACK key.

4.6 Save and Run

Save the program currently in the editor and run it.

Selecting this option is a quick way to save and then run. Any changes you have made are saved, overwriting your file, and your program is run immediately. A brief popup notifies you that your file has been changed. If the program you are editing has no name (not previously loaded or saved), the Editor will ask you what name to use.

4.7 Clear

Clear the program currently in the Editor.

You will be offered the opportunity to save the current program if it has been changed.

4.8 Search

Search for strings in the program being edited. Found strings may be replaced with a different string.

The Search view shows a Text Window with the text from the Editor, a **Search For** field and a **Replace With** field.

If there is a block of text currently selected in the Editor, then that text will be placed into the **Search For** field.

The screenshot shows a search interface with two input fields: 'Search For:' and 'Replace With:'. Below these fields are four buttons: 'NEXT', 'DONE', 'REPLACE', and 'REPL. ALL'.

The initial location of the search cursor will be at the start of the text regardless of where the cursor was in the Editor text.

Note that the search ignores case. For example, searching for "basic" will find "BASIC". This is because OliBasic converts the whole program to lower case (except characters within quotes) when the program is run.

The Search view also has buttons labeled

- [NEXT](#)
- [DONE](#)
- [REPLACE](#)
- [REPLACE ALL](#)

which are described in the following subsections.

4.8.1 NEXT Button

Start the search for the string in the **Search For** field. The search is started at the current cursor location. If the string is found then it will be selected in **Text Window**.

If the **Done** button is tapped at this point then the Editor will returned to with the found text selected.

If the **Replace** button is tapped then the selected text will be replaced.

Pressing the **Next** button again will start a new search starting at the end of the selected or replaced text.

If no matching text is found then a "string not found" message is shown. Tapping the **Done** button returns to the Editor with the cursor at the end of the program. Alternatively, you could change the **Search For** text and start a new search.

4.8.2 DONE Button

Returns to the Editor with the changed text. If there is selected text in the **Text Window** then that text will be shown selected in the Editor.

4.8.3 REPLACE Button

If **Next** has found and selected some text then that text is replaced by the contents of the **Replace With** field.

If no text has been found then the message, "Nothing found to replace" will be shown.

4.8.4 REPL. ALL Button

All occurrences of the **Search For** text are replaced with the **Replace With** text. **REPL. ALL** always starts at the start of the text. The last replaced item will be shown selected in the **Text Window**. The number of items replaced will be shown in a message.

4.8.5 BACK Key

Returns to the Editor with the original text unchanged. All changes made during the Search will be undone. Think of the BACK key as UNDO ALL.

4.9 Format

Format the program currently in the Editor.

The keywords are capitalized. Program lines are indented as appropriate for the program structure. Left- and right-double quotation marks (" and ") are replaced by simple ASCII quotation marks (").

When copying program text from the Forum or another web site, "non-breaking space" characters, designated ** ** in HTML, might have been inserted into the program text. Except when they are enclosed in quoted strings, **Format** converts these characters to simple ASCII spaces.

4.10 Delete

Delete files and directories.

The command can be used to delete files and directories that are used in OliBasic but it can also be used to delete any file or directory for which you have the required permissions. **Delete** starts in the OliBasic directory.

After selecting **Load**, you will see the "BASIC! Delete File" screen. The first line shows the path to your current directory. The next line is used to select the sort order. From the third line on, you will see a sorted list of the directories and program files in the current directory.

By default, the directories and files are sorted alphabetically, and the second (sort order) line will show: "Change sorting to: Date reverse". Tapping this line will change the sort order to Date Reverse order. The second line will then display "Change sorting to: ABC...abc..." which allows you to revert to alphabetic order when desired.

Directories are marked with **(d)** appended to the name and appear at the top of the list.

Tapping a file name displays the "Confirm Delete" dialog box. Tap the **Delete** button to delete the file. Tap the **No** button to dismiss the dialog box and not delete the file.

Tapping a directory name displays the contents of the directory. If the directory is empty the "Confirm Delete" dialog box is shown. Tap the **Delete** button to delete the directory. Tap the **No** button to dismiss the dialog box without deleting the directory.

Tap the **".."** at the top of the screen to move up one directory level. Tapping the **".."** has no effect if you are in the root directory **"/"**.

Exit **Delete** by tapping the BACK key.

4.11 Start/Stop FTP Server

Start or stop the OliBasic built-in FTP server.

If the FTP server is not already running, this Menu option will read **Start FTP Server**, otherwise it will read **Stop FTP Server**.

Currently, Android supports **scoped storage**. This means that an app (like OliBasic) is expected to only access files that are "**local**" to its own directory, as assigned by Android. This prevents access to "**external**" files. Moreover, other apps cannot access OliBasic's internal files, since this would mean accessing files that are external to them. Usually this is not a problem, and it improves security. However, not being able to share files with other apps may sometimes be a nuisance. For example, scoped storage prevents you from sharing files with a PC for backup purposes, etc.

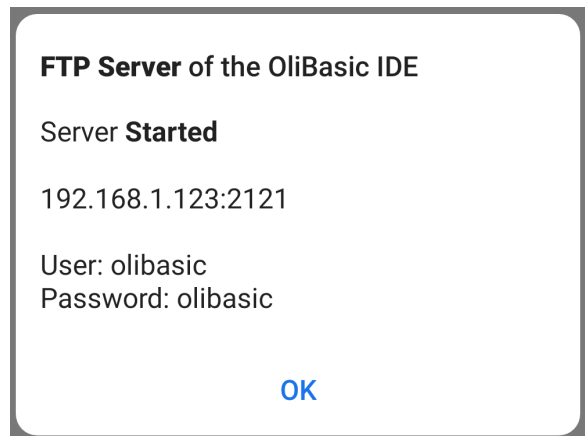
In order to overcome this problem OliBasic implements an FTP server. This allows another app, a PC, or anything else to use an FTP client to access all OliBasic files (source, data, databases, etc.).

After tapping **Start FTP Server**, the following will appear:

The last line shows the FTP address (192.168.1.123 for example) and port number (2121 for example).

Your FTP client should be set for:

- FTP address: must match server (192.168.1.123 for example).
- FTP port: must match server (2121 for example).
- User Name: olibasic
- Password: olibasic
- Mode: passive or active (passive recommended)
- Type: unix
- Auth: plain text

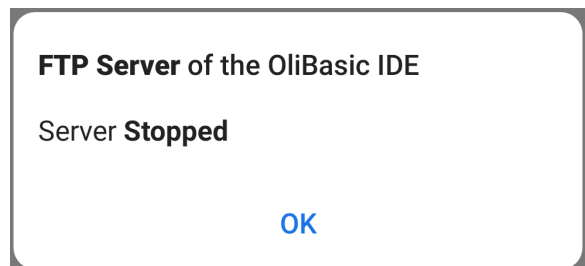


The root of the server starts at /Android/data/com.rfo.hbasic.

After tapping **Stop FTP Server**, the following will appear:

The server will be closed by any of the following:

- You tap **Stop FTP Server**.
- OliBasic is killed via the android recents list.
- Android removes it in the background.



If OliBasic is exited, either by the Menu Exit option or an OliBasic command, the server will still be running. To stop it, you have to run OliBasic again and stop it via the **Stop FTP Server** option.

4.12 Preferences

The Preferences screen will appear with the following options

- [Screen Colors](#)
- [Console Settings](#)
- [Editor Settings](#)
- [Menu Items On Action Bar](#)
- [Screen Orientation](#)
- [FTP Server Port](#)
- [Base Directory](#)

which are described in the following subsections.

4.12.1 Screen Colors

Opens a sub-menu with options for setting the colors of the various screens in OliBasic.

4.12.1.1 Color Scheme

Sets the color scheme of the screens. The schemes are identified by their appearance with the default colors. Choose one of the following:

- Black Text On White Screen
- White Text On Black Screen
- White Text On Blue Screen

4.12.1.2 Custom Colors

Check the box to override the Color Scheme setting, allowing you to set your own colors. You can set the following options:

- Text Color
- Background Color
- Line Color
- Highlight Color

Each color is specified as a single number of 8 hexadecimal characters: four fields of two characters each for Alpha (opacity), Red, Green, and Blue components.

4.12.2 Console Settings

Opens a sub-menu with options for settings of the Console and various others screens in OliBasic.

4.12.2.1 Font Size

Sets the font size to be used with the various screens in OliBasic as follows:

- Small
- Medium
- Large

4.12.2.2 Typeface

Choose the typeface to be used on the Output Console and some other screens:

- Monospace
- Sans Serif
- Serif

4.12.2.3 Console Menu

Check the box if the Menu should be visible in the Output Console and TGet screen.

4.12.2.4 Console Lines

Check the box if the text lines in the Output Console should be underlined.

4.12.2.5 Empty Console Color

Choose the background color of the part of the Output Console that has not yet been written. It can match the background color of the text or the color of the lines separating text lines:

- Use text background color

- Use separator line color

This setting also applies to the **Select** (but not **Dialog.select**) command.

4.12.3 Editor Settings

Opens a sub-menu with options for setting properties and features of the Program Editor.

4.12.3.1 Editor Lines

Check the box if the text lines in the Editor should be underlined.

4.12.3.2 Editor Line Wrap

Check the box if long text lines in the Editor should wrap at the edge of the screen. If unchecked, long lines are not wrapped, and the Editor screen may be scrolled horizontally.

4.12.3.3 Editor AutoIndent

Check the box if you want the Editor to do auto indentation. Enabling auto indentation also enables the formatting of a line that ends with the "#" character.

Some devices are not able to do auto indenting properly. In some of those devices the AutoIndent feature may cause the Editor to be unusable. If that happens, turn off AutoIndent.

4.12.4 Menu Items On Action Bar

Opens a sub-menu with options for moving some of the Editor menu items to the Action Bar, if there is room for them there. You can select as many as you like, but the number of items moved depends on the device and orientation. These options have no effect on Android devices before Honeycomb (3.0).

4.12.4.1 RUN on action bar

If checked, the Editor will attempt to move the RUN item from the Menu to the Action Bar.

4.12.4.2 LOAD on action bar

If checked, the Editor will attempt to move the LOAD item from the Menu to the Action Bar.

4.12.4.3 SAVE on action bar

If checked, the Editor will attempt to move the SAVE item from the Menu to the Action Bar.

4.12.4.4 SAVE and RUN on action bar

If checked, the Editor will attempt to move the SAVE and RUN item from the Menu to the Action Bar.

4.12.4.5 CLEAR on action bar

If checked, the Editor will attempt to move the CLEAR item from the Menu to the Action Bar.

4.12.4.6 SEARCH on action bar

If checked, the Editor will attempt to move the SEARCH item from the Menu to the Action Bar.

4.12.4.7 FORMAT on action bar

If checked, the Editor will attempt to move the FORMAT item from the Menu to the Action Bar.

4.12.4.8 EXIT on action bar

If checked, the Editor will attempt to move the EXIT item from the Menu to the Action Bar.

4.12.4.9 SUB MENU ICON on action bar

If checked, the Editor will attempt to move the SUB MENU ICON item from the Menu to the Action Bar.

4.12.5 Screen Orientation

Choose to allow the Sensors to determine the orientation of the screens or to set a fixed orientation without regard to the Sensors:

- Variable By Sensors
- Fixed Landscape
- Fixed Reverse Landscape
- Fixed Portrait
- Fixed Reverse Portrait

Note: The reverse orientations apply to Android 2.3 or newer.

4.12.6 FTP Server Port

Opens a dialog where you can enter your preferred port number. Allowed numbers are from 2100 to 2999.

4.12.7 Base Directory

Opens a dialog where you can select to use Internal or External file access.

Currently, Android supports **scoped storage**. This means that an app (like OliBasic) is expected to only access files that are "**local**" (**Internal**) to its own directory, as assigned by Android. This prevents access to "**External**" files. Moreover, other apps cannot access OliBasic's internal files, since this would mean accessing files that are external to them. Usually this is not a problem, and it improves security. However, not being able to share files with other apps may sometimes be a nuisance. For example, scoped storage prevents you from sharing files with a PC for backup purposes, etc.

The dialog allows you to choose scoped (internal) storage or external storage.

4.13 Commands

The Commands command presents the list of the OliBasic commands and functions.

Tapping an alpha key will cause the command list to scroll to commands that start with that character. There will be no scrolling if there is no command that starts with that character.

Note: You can hide the virtual keyboard with the BACK key. If you do that, you will not be able to get it back until you invoke the **Commands** option again.

Tapping on a particular command causes that command to be copied to the clipboard (not including the page number) and returning to the Editor. You can then paste the command into your program.

4.14 About

The About option displays the version of OliBasic that you are using, followed by a set of buttons that connect you to various websites with information about OliBasic. Make sure that you have a connection to the Internet before selecting one of the About buttons.

4.15 Exit

The only way to cleanly exit OliBasic is to use the **Exit** option.

Pressing the HOME key while in OliBasic leaves OliBasic in exactly the same state it was in when the

HOME key was tapped. If a program was running, it will still be running when OliBasic is re-entered. If you were in the process of deleting, the Delete screen will be shown when OliBasic is re-entered.

5 Running a Program

5.1 Run

Selecting Run from the Editor's menu starts the program running. However, if the source in the Editor has been changed, then the Save dialog will be displayed. You may choose to save the changed source or continue without saving.

The Output Console will be presented as soon as the program starts to run. You will not see anything on this screen unless one of the following situations occur:

- The program prints something.
- The **END** statement is executed.
- You are in Echo mode.
- There is a run-time error.

If the program does not print anything then the only indication you would get that the program has finished is if the program ends with an End statement.

If the program does not contain any executable statements then the message, "Nothing to execute" will be displayed.

Tapping the BACK key will stop a running program. Tapping the BACK key when the program run has ended will restart the Editor.

If the program ended with a run-time error, the line where the error occurred will be shown selected in the Editor. If the error occurred in an INCLUDE file then the INCLUDE statement will be shown selected.

The Editor cursor will remain where it was when the Run was started if no run-time error occurred.

5.2 Menu

Pressing the MENU key or tapping the Menu icon while a program is running, or after the program is stopped, will cause the Run Menu to be displayed. (Except when Graphics is running. See the Graphics section in the *OliBasic Reference Manual* for details.)

5.2.1 Stop

If a program is running, the Stop menu item will be enabled. Tapping Stop will stop the running program. Stop will not be enabled if a program is not running.

5.2.2 Editor

Editor will not be enabled if a program is running. If the program has stopped and Editor is thus enabled then selecting Editor will cause the Editor to be re-entered. You could also use the BACK key to do this.

6 An OliBasic Program

An OliBasic program is made up of lines of text. With a few exceptions that will be explained later, each line of text is one or more **statements**. If a line has more than one statement they are separated by colon (":") characters.

A statement always consists of a single command, usually followed by one or more parameters that are separated by commas. Here is a simple program:

```
Print "Hello, World!"
```

This program has one statement. The command is **Print**. It has one parameter, the string constant **"Hello, World!"**. A string constant, or string literal, is a set of characters enclosed in double quotation marks. This, too, will be explained later.

If you start OliBasic, so you are in the Editor, you can type in this one-line program. Then you can select Run from the Editor's menu and your program will be run. When the program is done running, you see the Console, the output screen, with **Hello, World!** printed at the top.

7 Sample Programs

The programs are loaded into "<pref base drive>/rfo-basic/source/Sample_Programs" when a new release of OliBasic is installed. You can access them by selecting **Menu**→**Load**. Tap the "Sample_Programs" line. The sample programs will be listed and can be loaded.

If you load and save one of these programs, the program will be saved in "<pref base drive>/rfo-basic/source/" not in "<pref base drive>/rfo-basic/source/Sample_Programs".

You can force OliBasic to re-load these programs by:

- Select **Menu**→**Delete**
- Navigate to "rfo-basic/source/Sample_Programs/"
- Delete the "f01_vxx.xx_read_me file"
- Exit OliBasic using **Menu**→**Exit** or **Menu**→**More**→**Exit**.

8 Launcher Shortcut Tutorial

8.1 Introduction

This tutorial will "compile" an OliBasic program and create an "application" that resides on your Android device home page. This "application" will have its own Icon and Name. The official Android name for this type of "application" is "Shortcut." The OliBasic application must be installed for this to work.

8.2 How to Make a Shortcut Application

The following instructions may vary depending on the version of Android that you are using.

1. Depending on your Android version, select the Apps Page or touch and hold your home screen.
2. Look for the Widgets screen and access it.
3. Scroll until you see the OliBasic icon that says Launcher Shortcuts.
4. Touch and hold that entry, then drag it to your home page.
5. The Launcher Shortcuts screen shown on the right will appear.
6. Fill out the Form exactly as shown. For example:
 - Program File Name: Sample_Programs/f13_animations.bas.
 - Icon File Name: cartman.png.
 - Shortcut Name: Cartman.
7. Tap OK.

You should see something like this on your HOME screen.

If you tap the Cartman shortcut, OliBasic will start and run the Cartman Jumping Demo.



8.3 What you need to know

- The icon image file must be located in the "<pref base drive>/rfo-basic/data/" directory.
- The program that you are going to run must be in the "source" directory or one of its subdirectories. In this example, the file was located in the Sample_Programs(d) subdirectory of the "source(d)" directory.
- The icon should be a .png file. A Google search for "icon" will reveal thousands for free icons. Just copy your icon into the "rfo-basic/data" directory.

- Be very careful to correctly spell the names of the program and icon files. OliBasic does not check to see if these files actually exist during the "compile" process. If you enter the name of an icon file that does not exist, your shortcut will have the generic Android icon. If the file name you specified does not exist, when you tap the Shortcut you will see an error message in the form of program file in the Editor.
- The Shortcut name should be nine (9) characters or less. Android will not show more than nine characters.
- You can create as many shortcuts as your home screen(s) can handle.
- Tapping "Cancel" in the Launcher Shortcuts dialog will simply cancel the operation and return to the home screen.
- If you plan to use an OliBasic Launcher Shortcut, you should always exit OliBasic using **Exit**→**Menu** or **Menu**→**More**→**Exit**. If a Launched program is running, tapping BACK once or twice will exit OliBasic back to the Home Screen.
- Your program can tell if it was launched via a shortcut by using the **Program.info** command (see OliBasic Reference).

9 OliBasic Distribution License

9.1 GNU General Public License

OliBasic is distributed under the terms of the GNU General Public License which is reproduced here.

GNU GENERAL PUBLIC LICENSE

Version 3, 29 June 2007

Copyright (C) 2007 Free Software Foundation, Inc. <<https://fsf.org/>>

Everyone is permitted to copy and distribute verbatim copies of this license document, but changing it is not allowed.

Preamble

The GNU General Public License is a free, copyleft license for software and other kinds of works.

The licenses for most software and other practical works are designed to take away your freedom to share and change the works. By contrast, the GNU General Public License is intended to guarantee your freedom to share and change all versions of a program--to make sure it remains free software for all its users. We, the Free Software Foundation, use the GNU General Public License for most of our software; it applies also to any other work released this way by its authors. You can apply it to your programs, too.

When we speak of free software, we are referring to freedom, not price. Our General Public Licenses are designed to make sure that you have the freedom to distribute copies of free software (and charge for them if you wish), that you receive source code or can get it if you want it, that you can change the software or use pieces of it in new free programs, and that you know you can do these things.

To protect your rights, we need to prevent others from denying you these rights or asking you to surrender the rights. Therefore, you have certain responsibilities if you distribute copies of the software, or if you modify it: responsibilities to respect the freedom of others.

For example, if you distribute copies of such a program, whether gratis or for a fee, you must pass on to the recipients the same freedoms that you received. You must make sure that they, too, receive or can get the source code. And you must show them these terms so they know their rights.

Developers that use the GNU GPL protect your rights with two steps: (1) assert copyright on the software, and (2) offer you this License giving you legal permission to copy, distribute and/or modify it.

For the developers' and authors' protection, the GPL clearly explains that there is no warranty for this free software. For both users' and authors' sake, the GPL requires that modified versions be marked as changed, so that their problems will not be attributed erroneously to authors of previous versions.

Some devices are designed to deny users access to install or run modified versions of the software inside them, although the manufacturer can do so. This is fundamentally incompatible with the aim of protecting users' freedom to change the software. The systematic pattern of such abuse occurs in the area of products for individuals to use, which is precisely where it is most unacceptable. Therefore, we have designed this version of the GPL to prohibit the practice for those products. If such problems arise substantially in other domains, we stand ready to extend this provision to those domains in future versions of the GPL, as needed to protect the freedom of users.

Finally, every program is threatened constantly by software patents. States should not allow patents to

restrict development and use of software on general-purpose computers, but in those that do, we wish to avoid the special danger that patents applied to a free program could make it effectively proprietary. To prevent this, the GPL assures that patents cannot be used to render the program non-free.

The precise terms and conditions for copying, distribution and modification follow.

TERMS AND CONDITIONS

0. Definitions.

"This License" refers to version 3 of the GNU General Public License.

"Copyright" also means copyright-like laws that apply to other kinds of works, such as semiconductor masks.

"The Program" refers to any copyrightable work licensed under this License. Each licensee is addressed as "you". "Licensees" and "recipients" may be individuals or organizations.

To "modify" a work means to copy from or adapt all or part of the work in a fashion requiring copyright permission, other than the making of an exact copy. The resulting work is called a "modified version" of the earlier work or a work "based on" the earlier work.

A "covered work" means either the unmodified Program or a work based on the Program.

To "propagate" a work means to do anything with it that, without permission, would make you directly or secondarily liable for infringement under applicable copyright law, except executing it on a computer or modifying a private copy. Propagation includes copying, distribution (with or without modification), making available to the public, and in some countries other activities as well.

To "convey" a work means any kind of propagation that enables other parties to make or receive copies. Mere interaction with a user through a computer network, with no transfer of a copy, is not conveying.

An interactive user interface displays "Appropriate Legal Notices" to the extent that it includes a convenient and prominently visible feature that (1) displays an appropriate copyright notice, and (2) tells the user that there is no warranty for the work (except to the extent that warranties are provided), that licensees may convey the work under this License, and how to view a copy of this License. If the interface presents a list of user commands or options, such as a menu, a prominent item in the list meets this criterion.

1. Source Code.

The "source code" for a work means the preferred form of the work for making modifications to it. "Object code" means any non-source form of a work.

A "Standard Interface" means an interface that either is an official standard defined by a recognized standards body, or, in the case of interfaces specified for a particular programming language, one that is widely used among developers working in that language.

The "System Libraries" of an executable work include anything, other than the work as a whole, that (a) is included in the normal form of packaging a Major Component, but which is not part of that Major Component, and (b) serves only to enable use of the work with that Major Component, or to implement a Standard Interface for which an implementation is available to the public in source code form. A "Major Component", in this context, means a major essential component (kernel, window system, and so on) of the specific operating system (if any) on which the executable work runs, or a compiler used to produce the work, or an object code interpreter used to run it.

The "Corresponding Source" for a work in object code form means all the source code needed to generate, install, and (for an executable work) run the object code and to modify the work, including scripts to control those activities. However, it does not include the work's System Libraries, or general-purpose tools or generally available free programs which are used unmodified in performing those activities but which are not part of the work. For example, Corresponding Source includes interface definition files associated with source files for the work, and the source code for shared libraries and dynamically linked subprograms that the work is specifically designed to require, such as by intimate data communication or control flow between those subprograms and other parts of the work.

The Corresponding Source need not include anything that users can regenerate automatically from other parts of the Corresponding Source.

The Corresponding Source for a work in source code form is that same work.

2. Basic Permissions.

All rights granted under this License are granted for the term of copyright on the Program, and are irrevocable provided the stated conditions are met. This License explicitly affirms your unlimited permission to run the unmodified Program. The output from running a covered work is covered by this License only if the output, given its content, constitutes a covered work. This License acknowledges your rights of fair use or other equivalent, as provided by copyright law.

You may make, run and propagate covered works that you do not convey, without conditions so long as your license otherwise remains in force. You may convey covered works to others for the sole purpose of having them make modifications exclusively for you, or provide you with facilities for running those works, provided that you comply with the terms of this License in conveying all material for which you do not control copyright. Those thus making or running the covered works for you must do so exclusively on your behalf, under your direction and control, on terms that prohibit them from making any copies of your copyrighted material outside their relationship with you.

Conveying under any other circumstances is permitted solely under the conditions stated below. Sublicensing is not allowed; section 10 makes it unnecessary.

3. Protecting Users' Legal Rights From Anti-Circumvention Law.

No covered work shall be deemed part of an effective technological measure under any applicable law fulfilling obligations under article 11 of the WIPO copyright treaty adopted on 20 December 1996, or similar laws prohibiting or restricting circumvention of such measures.

When you convey a covered work, you waive any legal power to forbid circumvention of technological measures to the extent such circumvention is effected by exercising rights under this License with respect to the covered work, and you disclaim any intention to limit operation or modification of the work as a means of enforcing, against the work's users, your or third parties' legal rights to forbid circumvention of technological measures.

4. Conveying Verbatim Copies.

You may convey verbatim copies of the Program's source code as you receive it, in any medium, provided that you conspicuously and appropriately publish on each copy an appropriate copyright notice; keep intact all notices stating that this License and any non-permissive terms added in accord with section 7 apply to the code; keep intact all notices of the absence of any warranty; and give all recipients a copy of this License along with the Program.

You may charge any price or no price for each copy that you convey, and you may offer support or warranty protection for a fee.

5. Conveying Modified Source Versions.

You may convey a work based on the Program, or the modifications to produce it from the Program, in the form of source code under the terms of section 4, provided that you also meet all of these conditions:

- a) The work must carry prominent notices stating that you modified it, and giving a relevant date.
- b) The work must carry prominent notices stating that it is released under this License and any conditions added under section 7. This requirement modifies the requirement in section 4 to "keep intact all notices".
- c) You must license the entire work, as a whole, under this License to anyone who comes into possession of a copy. This License will therefore apply, along with any applicable section 7 additional terms, to the whole of the work, and all its parts, regardless of how they are packaged. This License gives no permission to license the work in any other way, but it does not invalidate such permission if you have separately received it.
- d) If the work has interactive user interfaces, each must display Appropriate Legal Notices; however, if the Program has interactive interfaces that do not display Appropriate Legal Notices, your work need not make them do so.

A compilation of a covered work with other separate and independent works, which are not by their nature extensions of the covered work, and which are not combined with it such as to form a larger program, in or on a volume of a storage or distribution medium, is called an "aggregate" if the compilation and its resulting copyright are not used to limit the access or legal rights of the compilation's users beyond what the individual works permit. Inclusion of a covered work in an aggregate does not cause this License to apply to the other parts of the aggregate.

6. Conveying Non-Source Forms.

You may convey a covered work in object code form under the terms of sections 4 and 5, provided that you also convey the machine-readable Corresponding Source under the terms of this License, in one of these ways:

- a) Convey the object code in, or embodied in, a physical product (including a physical distribution medium), accompanied by the Corresponding Source fixed on a durable physical medium customarily used for software interchange.
- b) Convey the object code in, or embodied in, a physical product (including a physical distribution medium), accompanied by a written offer, valid for at least three years and valid for as long as you offer spare parts or customer support for that product model, to give anyone who possesses the object code either (1) a copy of the Corresponding Source for all the software in the product that is covered by this License, on a durable physical medium customarily used for software interchange, for a price no more than your reasonable cost of physically performing this conveying of source, or (2) access to copy the Corresponding Source from a network server at no charge.
- c) Convey individual copies of the object code with a copy of the written offer to provide the Corresponding Source. This alternative is allowed only occasionally and noncommercially, and only if you received the object code with such an offer, in accord with subsection 6b.
- d) Convey the object code by offering access from a designated place (gratis or for a charge), and offer equivalent access to the Corresponding Source in the same way through the same place at no further charge. You need not require recipients to copy the Corresponding Source along with the object code. If the place to copy the object code is a network server, the

Corresponding Source may be on a different server (operated by you or a third party) that supports equivalent copying facilities, provided you maintain clear directions next to the object code saying where to find the Corresponding Source. Regardless of what server hosts the Corresponding Source, you remain obligated to ensure that it is available for as long as needed to satisfy these requirements.

e) Convey the object code using peer-to-peer transmission, provided you inform other peers where the object code and Corresponding Source of the work are being offered to the general public at no charge under subsection 6d.

A separable portion of the object code, whose source code is excluded from the Corresponding Source as a System Library, need not be included in conveying the object code work.

A "User Product" is either (1) a "consumer product", which means any tangible personal property which is normally used for personal, family, or household purposes, or (2) anything designed or sold for incorporation into a dwelling. In determining whether a product is a consumer product, doubtful cases shall be resolved in favor of coverage. For a particular product received by a particular user, "normally used" refers to a typical or common use of that class of product, regardless of the status of the particular user or of the way in which the particular user actually uses, or expects or is expected to use, the product. A product is a consumer product regardless of whether the product has substantial commercial, industrial or non-consumer uses, unless such uses represent the only significant mode of use of the product.

"Installation Information" for a User Product means any methods, procedures, authorization keys, or other information required to install and execute modified versions of a covered work in that User Product from a modified version of its Corresponding Source. The information must suffice to ensure that the continued functioning of the modified object code is in no case prevented or interfered with solely because modification has been made.

If you convey an object code work under this section in, or with, or specifically for use in, a User Product, and the conveying occurs as part of a transaction in which the right of possession and use of the User Product is transferred to the recipient in perpetuity or for a fixed term (regardless of how the transaction is characterized), the Corresponding Source conveyed under this section must be accompanied by the Installation Information. But this requirement does not apply if neither you nor any third party retains the ability to install modified object code on the User Product (for example, the work has been installed in ROM).

The requirement to provide Installation Information does not include a requirement to continue to provide support service, warranty, or updates for a work that has been modified or installed by the recipient, or for the User Product in which it has been modified or installed. Access to a network may be denied when the modification itself materially and adversely affects the operation of the network or violates the rules and protocols for communication across the network.

Corresponding Source conveyed, and Installation Information provided, in accord with this section must be in a format that is publicly documented (and with an implementation available to the public in source code form), and must require no special password or key for unpacking, reading or copying.

7. Additional Terms.

"Additional permissions" are terms that supplement the terms of this License by making exceptions from one or more of its conditions. Additional permissions that are applicable to the entire Program shall be treated as though they were included in this License, to the extent that they are valid under applicable law. If additional permissions apply only to part of the Program, that part may be used separately under those permissions, but the entire Program remains governed by this License without regard to the additional permissions.

When you convey a copy of a covered work, you may at your option remove any additional permissions from that copy, or from any part of it. (Additional permissions may be written to require their own removal in certain cases when you modify the work.) You may place additional permissions on material, added by you to a covered work, for which you have or can give appropriate copyright permission.

Notwithstanding any other provision of this License, for material you add to a covered work, you may (if authorized by the copyright holders of that material) supplement the terms of this License with terms:

- a) Disclaiming warranty or limiting liability differently from the terms of sections 15 and 16 of this License; or
- b) Requiring preservation of specified reasonable legal notices or author attributions in that material or in the Appropriate Legal Notices displayed by works containing it; or
- c) Prohibiting misrepresentation of the origin of that material, or requiring that modified versions of such material be marked in reasonable ways as different from the original version; or
- d) Limiting the use for publicity purposes of names of licensors or authors of the material; or
- e) Declining to grant rights under trademark law for use of some trade names, trademarks, or service marks; or
- f) Requiring indemnification of licensors and authors of that material by anyone who conveys the material (or modified versions of it) with contractual assumptions of liability to the recipient, for any liability that these contractual assumptions directly impose on those licensors and authors.

All other non-permissive additional terms are considered "further restrictions" within the meaning of section 10. If the Program as you received it, or any part of it, contains a notice stating that it is governed by this License along with a term that is a further restriction, you may remove that term. If a license document contains a further restriction but permits relicensing or conveying under this License, you may add to a covered work material governed by the terms of that license document, provided that the further restriction does not survive such relicensing or conveying.

If you add terms to a covered work in accord with this section, you must place, in the relevant source files, a statement of the additional terms that apply to those files, or a notice indicating where to find the applicable terms.

Additional terms, permissive or non-permissive, may be stated in the form of a separately written license, or stated as exceptions; the above requirements apply either way.

8. Termination.

You may not propagate or modify a covered work except as expressly provided under this License. Any attempt otherwise to propagate or modify it is void, and will automatically terminate your rights under this License (including any patent licenses granted under the third paragraph of section 11).

However, if you cease all violation of this License, then your license from a particular copyright holder is reinstated (a) provisionally, unless and until the copyright holder explicitly and finally terminates your license, and (b) permanently, if the copyright holder fails to notify you of the violation by some reasonable means prior to 60 days after the cessation.

Moreover, your license from a particular copyright holder is reinstated permanently if the copyright holder notifies you of the violation by some reasonable means, this is the first time you have received notice of violation of this License (for any work) from that copyright holder, and you cure the violation prior to 30 days after your receipt of the notice.

Termination of your rights under this section does not terminate the licenses of parties who have received copies or rights from you under this License. If your rights have been terminated and not permanently reinstated, you do not qualify to receive new licenses for the same material under section 10.

9. Acceptance Not Required for Having Copies.

You are not required to accept this License in order to receive or run a copy of the Program. Ancillary propagation of a covered work occurring solely as a consequence of using peer-to-peer transmission to receive a copy likewise does not require acceptance. However, nothing other than this License grants you permission to propagate or modify any covered work. These actions infringe copyright if you do not accept this License. Therefore, by modifying or propagating a covered work, you indicate your acceptance of this License to do so.

10. Automatic Licensing of Downstream Recipients.

Each time you convey a covered work, the recipient automatically receives a license from the original licensors, to run, modify and propagate that work, subject to this License. You are not responsible for enforcing compliance by third parties with this License.

An "entity transaction" is a transaction transferring control of an organization, or substantially all assets of one, or subdividing an organization, or merging organizations. If propagation of a covered work results from an entity transaction, each party to that transaction who receives a copy of the work also receives whatever licenses to the work the party's predecessor in interest had or could give under the previous paragraph, plus a right to possession of the Corresponding Source of the work from the predecessor in interest, if the predecessor has it or can get it with reasonable efforts.

You may not impose any further restrictions on the exercise of the rights granted or affirmed under this License. For example, you may not impose a license fee, royalty, or other charge for exercise of rights granted under this License, and you may not initiate litigation (including a cross-claim or counterclaim in a lawsuit) alleging that any patent claim is infringed by making, using, selling, offering for sale, or importing the Program or any portion of it.

11. Patents.

A "contributor" is a copyright holder who authorizes use under this License of the Program or a work on which the Program is based. The work thus licensed is called the contributor's "contributor version".

A contributor's "essential patent claims" are all patent claims owned or controlled by the contributor, whether already acquired or hereafter acquired, that would be infringed by some manner, permitted by this License, of making, using, or selling its contributor version, but do not include claims that would be infringed only as a consequence of further modification of the contributor version. For purposes of this definition, "control" includes the right to grant patent sublicenses in a manner consistent with the requirements of this License.

Each contributor grants you a non-exclusive, worldwide, royalty-free patent license under the contributor's essential patent claims, to make, use, sell, offer for sale, import and otherwise run, modify and propagate the contents of its contributor version.

In the following three paragraphs, a "patent license" is any express agreement or commitment, however denominated, not to enforce a patent (such as an express permission to practice a patent or covenant not to sue for patent infringement). To "grant" such a patent license to a party means to make such an agreement or commitment not to enforce a patent against the party.

If you convey a covered work, knowingly relying on a patent license, and the Corresponding Source of the work is not available for anyone to copy, free of charge and under the terms of this License, through

a publicly available network server or other readily accessible means, then you must either (1) cause the Corresponding Source to be so available, or (2) arrange to deprive yourself of the benefit of the patent license for this particular work, or (3) arrange, in a manner consistent with the requirements of this License, to extend the patent license to downstream recipients. "Knowingly relying" means you have actual knowledge that, but for the patent license, your conveying the covered work in a country, or your recipient's use of the covered work in a country, would infringe one or more identifiable patents in that country that you have reason to believe are valid.

If, pursuant to or in connection with a single transaction or arrangement, you convey, or propagate by procuring conveyance of, a covered work, and grant a patent license to some of the parties receiving the covered work authorizing them to use, propagate, modify or convey a specific copy of the covered work, then the patent license you grant is automatically extended to all recipients of the covered work and works based on it.

A patent license is "discriminatory" if it does not include within the scope of its coverage, prohibits the exercise of, or is conditioned on the non-exercise of one or more of the rights that are specifically granted under this License. You may not convey a covered work if you are a party to an arrangement with a third party that is in the business of distributing software, under which you make payment to the third party based on the extent of your activity of conveying the work, and under which the third party grants, to any of the parties who would receive the covered work from you, a discriminatory patent license (a) in connection with copies of the covered work conveyed by you (or copies made from those copies), or (b) primarily for and in connection with specific products or compilations that contain the covered work, unless you entered into that arrangement, or that patent license was granted, prior to 28 March 2007.

Nothing in this License shall be construed as excluding or limiting any implied license or other defenses to infringement that may otherwise be available to you under applicable patent law.

12. No Surrender of Others' Freedom.

If conditions are imposed on you (whether by court order, agreement or otherwise) that contradict the conditions of this License, they do not excuse you from the conditions of this License. If you cannot convey a covered work so as to satisfy simultaneously your obligations under this License and any other pertinent obligations, then as a consequence you may not convey it at all. For example, if you agree to terms that obligate you to collect a royalty for further conveying from those to whom you convey the Program, the only way you could satisfy both those terms and this License would be to refrain entirely from conveying the Program.

13. Use with the GNU Affero General Public License.

Notwithstanding any other provision of this License, you have permission to link or combine any covered work with a work licensed under version 3 of the GNU Affero General Public License into a single combined work, and to convey the resulting work. The terms of this License will continue to apply to the part which is the covered work, but the special requirements of the GNU Affero General Public License, section 13, concerning interaction through a network will apply to the combination as such.

14. Revised Versions of this License.

The Free Software Foundation may publish revised and/or new versions of the GNU General Public License from time to time. Such new versions will be similar in spirit to the present version, but may differ in detail to address new problems or concerns.

Each version is given a distinguishing version number. If the Program specifies that a certain numbered version of the GNU General Public License "or any later version" applies to it, you have the option of following the terms and conditions either of that numbered version or of any later version

published by the Free Software Foundation. If the Program does not specify a version number of the GNU General Public License, you may choose any version ever published by the Free Software Foundation.

If the Program specifies that a proxy can decide which future versions of the GNU General Public License can be used, that proxy's public statement of acceptance of a version permanently authorizes you to choose that version for the Program.

Later license versions may give you additional or different permissions. However, no additional obligations are imposed on any author or copyright holder as a result of your choosing to follow a later version.

15. Disclaimer of Warranty.

THERE IS NO WARRANTY FOR THE PROGRAM, TO THE EXTENT PERMITTED BY APPLICABLE LAW. EXCEPT WHEN OTHERWISE STATED IN WRITING THE COPYRIGHT HOLDERS AND/OR OTHER PARTIES PROVIDE THE PROGRAM "AS IS" WITHOUT WARRANTY OF ANY KIND, EITHER EXPRESSED OR IMPLIED, INCLUDING, BUT NOT LIMITED TO, THE IMPLIED WARRANTIES OF MERCHANTABILITY AND FITNESS FOR A PARTICULAR PURPOSE. THE ENTIRE RISK AS TO THE QUALITY AND PERFORMANCE OF THE PROGRAM IS WITH YOU. SHOULD THE PROGRAM PROVE DEFECTIVE, YOU ASSUME THE COST OF ALL NECESSARY SERVICING, REPAIR OR CORRECTION.

16. Limitation of Liability.

IN NO EVENT UNLESS REQUIRED BY APPLICABLE LAW OR AGREED TO IN WRITING WILL ANY COPYRIGHT HOLDER, OR ANY OTHER PARTY WHO MODIFIES AND/OR CONVEYS THE PROGRAM AS PERMITTED ABOVE, BE LIABLE TO YOU FOR DAMAGES, INCLUDING ANY GENERAL, SPECIAL, INCIDENTAL OR CONSEQUENTIAL DAMAGES ARISING OUT OF THE USE OR INABILITY TO USE THE PROGRAM (INCLUDING BUT NOT LIMITED TO LOSS OF DATA OR DATA BEING RENDERED INACCURATE OR LOSSES SUSTAINED BY YOU OR THIRD PARTIES OR A FAILURE OF THE PROGRAM TO OPERATE WITH ANY OTHER PROGRAMS), EVEN IF SUCH HOLDER OR OTHER PARTY HAS BEEN ADVISED OF THE POSSIBILITY OF SUCH DAMAGES.

17. Interpretation of Sections 15 and 16.

If the disclaimer of warranty and limitation of liability provided above cannot be given local legal effect according to their terms, reviewing courts shall apply local law that most closely approximates an absolute waiver of all civil liability in connection with the Program, unless a warranty or assumption of liability accompanies a copy of the Program in return for a fee.

END OF TERMS AND CONDITIONS

9.2 Apache Commons

Portions of OliBasic use Apache Commons.

Apache Commons Net

Copyright 2001-2012 The Apache Software Foundation

This product includes software developed by

The Apache Software Foundation (<http://www.apache.org/>).

